



Standard / Marking

EN 60669-2-3



Staircase switches

Applications



Lighting or ventilation of staircases, basements, halls, etc.

Features

- Designed for a real 3.500W switching capacity.
- User adjustable time.
- Electromechanical contact and electronic timer with manual override off or on possible at all time for VTR4.
- 3 or 4 wire wiring possible.
- Device for pre-extinction warning adjustable from 20 to 40 sec only for incandescence sources.
- Safety terminals equipped with captive Pozidriv screws and IP20 protection degree.
- Anti vandalisme: resistant to blocked push-buttons.

Function

Push-button operated single-shot timer, switching the power to the load after the push-button has been pushed briefly, and switching off again after the preset time has elapsed.

Energy saving: the VTR5 is especially developed to switch off during the preset time when the staircase switch receives a new impulse.

Performance

| | | | VTR5 | VTR4 | VTRHL |
|---|---|--------------|-----------------|-----------------|-----------------|
| Rated current (acc. IEC 669-2-3) | A | | 16 | 16 | 16 |
| Width (in number of DIN-modules) | | | 1 | 1 | 1 |
| Contacts | NO | | 1 | 1 | 1 |
| Time range | 1 function | | 1mn / 20mn | 30s / 15mn | 20s / 40s |
| Supply voltage | 230V - 50/60Hz | | yes | yes | yes |
| | 24V AC / 24V DC | | on request | on request | on request |
| | Supply voltage range (in % of Un) | % | 90-110 | 90-110 | 90-110 |
| Rated power consumption | | | | | |
| | Closed circuit current | 230V VA | 4.0 | 4.0 | 4.0 |
| | Working current (ignition & running) | 230V VA | 4.0 | 4.0 | 4.0 |
| Light types | | | | | |
| | Incandescent lamps | | yes | yes | yes |
| | Fluorescent lamps | | yes | yes | no |
| Switching capacity | | | | | |
| | AC-5b Incandescent lamps (40 to 200 W lamps) | W | 3,500 | 3,500 | 3,500 |
| | Fluorescence compensated (cos $\varphi = 0.9$) | | | | |
| | Serial compensation | W | 3,500 | 3,500 | n/a |
| | Parallel compensation | VA | 2,500 | 2,500 | n/a |
| Lifetime (in number of operations)⁽¹⁾ | | | | | |
| | Electrical (AC-1) | at 1,200W | 2×10^6 | 2×10^6 | 2×10^6 |
| | | at full load | 1×10^6 | 3×10^5 | 3×10^5 |
| | Mechanical | | 1×10^7 | 1×10^7 | 1×10^7 |
| Max. number of push-buttons | | | | | |
| | Non illuminated push-buttons | | unlimited | unlimited | unlimited |
| | Luminous push-buttons (0.6mA): | | | | |
| | 4 terminals | | unlimited | unlimited | unlimited |
| | 3 terminals | | | | |
| | Without compensator | | 39 | 83 | 83 |
| | 1 compensator (2 μ F) | | 45 | 300 | 300 |
| | 2 compensators (2 x 2 μ F) | | 59 | 600 | 600 |
| General specifications | | | | | |
| | DIN rail mounting | | yes | yes | yes |
| | Silent operations | | yes | yes | yes |
| | Setting accuracy - Full range | % | +/- 15 | +/- 15 | +/- 15 |
| | 3-wire and 4-wire installation | | yes | yes | yes |
| | Resistant to blocked push-buttons | | yes | yes | yes |
| | Continuously adjustable time-lag | | yes | yes | yes |
| | Manual switching (number of positions) | | 2 | 3 | - |
| | Front switch-off lever | | yes | yes | - |
| | Clamping screw terminals, unlosable screws | | yes | yes | yes |
| | Cable cross section (\varnothing min./max) | Coil | mm ² | 1.5 / 10 | 1.5 / 10 |
| | | Load | mm ² | 1.5 / 10 | 1.5 / 10 |
| | Maximum torque on terminals | N x m | 1 | 1 | 1 |
| | Ambient temperature at installation point (min./max.) | °C | -20 / +45 | -20 / +45 | -20 / +45 |

(1) cycle = 2 operations per pole (closing + opening)

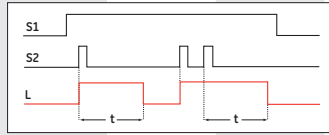
Staircase switches



Staircase switch



| Nominal current | Contact combination | Coil voltage AC | Coil voltage DC | Number of modules | Cat. No. | Ref. No. | Pack. |
|-----------------|---------------------|-----------------|-----------------|-------------------|----------|----------|-------|
| 16 | 1NO | 230 | - | 1 | VTR 4 | 686031 | 12 |



Dimmer for staircase switch

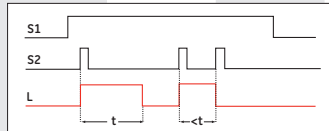
| | | | | | | | |
|---|-------|-----|---|---|-------|--------|----|
| 16 | 3500W | 230 | - | 1 | VTRHL | 686033 | 12 |
| To be used only in combination with the staircase switch. | | | | | | | |



Time-delay impulse relay



| | | | | | | | |
|----|-----|-----|---|---|-------|--------|----|
| 16 | 1NO | 230 | - | 1 | VTR 5 | 686252 | 12 |
|----|-----|-----|---|---|-------|--------|----|

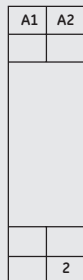


Terminal identification

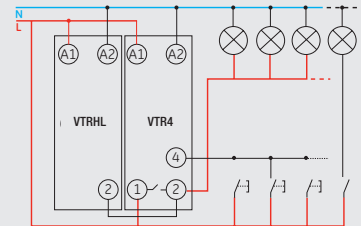
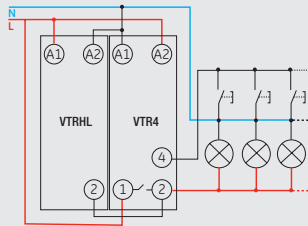
Staircase switch
Time-delay impulse relay



Dimmer for staircase switch



Wiring diagrams



Dimensional drawings

